



BRADLEY

& SON FUNERAL HOMES, LLC

A life well remembered.

GENERAL PRICE LIST

Effective January 01, 2024

The goods and services shown within are those we can provide to our customers. You may choose only the items you desire. However, any funeral arrangements you select will include a charge for our basic services and overhead. If legal or other requirements mean you must buy any items you did not specifically ask for, we will explain the reason in writing on the statement we provide describing the funeral goods and services you selected.

All Major Credit Cards Accepted



THE BRADLEY GUARANTEE

Our staff is courteous and sympathetic. Our facilities are comfortable and spotless. Our services are handled with dignity and respect. If you are not completely satisfied with any of our professional services or facilities, you will not be charged for that particular service.

Bradley & Son Funeral Homes is proud to serve families in five communities.

Wm. A. Bradley & Son
Funeral Home
Chatham, NJ

Bradley-Braviak
Funeral Home
Whippany, NJ

Bradley, Haeberle &
Barth Funeral Home
Union, NJ

Bradley, Smith &
Smith Funeral Home
Springfield, NJ

Bradley, Brough &
Dangler Funeral Home
Summit, NJ

973.908.6004 | www.BradleyFuneralHomes.com

Bradley Funeral Home Locations

WM. A. BRADLEY & SON FUNERAL HOME

345 MAIN ST. CHATHAM, NJ 07928



John E. Caffrey, Manager
N.J. Lic. No.4398
PH: (973) 635-2428
EM: john@bradleyfuneralhomes.com



BRADLEY-BRAVIK FUNERAL HOME

49 WHIPPANY RD. WHIPPANY, NJ 07981



Christopher J. Lisewski, Manager
N.J. Lic. No. 4057
PH: (973) 887-2186
EM: chris@bradleyfuneralhomes.com



BRADLEY, BROUGH & DANGLER FUNERAL HOME

299 MORRIS AVE. SUMMIT, NJ 07901



Patrick Reynolds, Manager
N.J. Lic. No. 4059
PH: (908) 273-2323
EM: patrick@bradleyfuneralhomes.com



BRADLEY, SMITH & SMITH FUNERAL HOME

415 MORRIS AVE. SPRINGFIELD, NJ 07081



Scott Bradley, Manager
N.J. Lic. No. 3894
PH: (973) 376-7777
EM: scott@bradleyfuneralhomes.com



BRADLEY, HAEBERLE & BARTH FUNERAL HOME

1100 PINE AVE. UNION, NJ 07083



Lauren Hayes, Manager
N.J. Lic. No. 4609
PH: (908) 686-6666
EM: lauren@bradleyfuneralhomes.com





To the families we serve:

We understand what it means to be bereaved and that you may be bewildered and in shock. Our mission is to bring care and comfort to you at this very difficult moment. We want to do this because we know mourning, not just grieving, really makes a difference in how we heal from a loss. In order to truly understand what will help, we promise to listen intently to your needs, follow through with our promises, and follow up with you until you don't need support.

We would like to recommend you complete three tasks in order to lessen the intensity of mourning. First, witness the deceased where it is most comfortable for you; be it at the place of death, such as the hospital, home or nursing home or somewhere else such as the funeral home. Second, have a ceremony that acknowledges your loss, pays tribute to the deceased and honors your faith. Lastly, invite the public. It's good for the community and will be good for you even though you may be anxious about it. Grief is a universal feeling that is best relieved through being with others.

Our funeral directors are experts in grief, mourning and ceremony. They will lead a team of caregivers to assist you, your family and your guests through this difficult time. It is our goal to provide you with an incomparable experience that honors your deceased loved one through tributes and services completely unique to your family and only available at Bradley Funeral Homes.

We only ask one favor of you. Please tell us everything we can do to make this most difficult of life transitions the most meaningful.

Sincerely,

A handwritten signature in black ink, appearing to read 'Scott W. Bradley'. The signature is fluid and cursive, with a large, stylized 'S' and 'B'.

Scott W. Bradley
Third-Generation Owner

Services

PROFESSIONAL SERVICES OF FUNERAL DIRECTOR AND STAFF

Basic Services of Funeral Director and Staff

Services included, but not limited to: (1) responding to the initial request for service; (2) conducting the arrangement conference; (3) preparation of biographical and statistical data; (4) examination of financial settlement options; (5) preparation and filing of papers, permits and authorizations; (6) coordination with those providing other services; (7) preparation and placement of obituary notices; (8) retention and care of remains prior to commencement of post death activities; (9) overhead expenses relative to our facility and operations, such as occupancy, administrative and equipment costs.

Professional Services

In addition to the professional services outlined in our general price list, our services also include:

Staff response 24 hours per day, 365 days per year to initial requests for services. Conducting the arrangement conference with the responsible party(ies) to determine desired services.

Coordinating desired service plans with the cemetery, crematory, clergy, fraternal lodges, military, civic organizations, and/or other parties involved in the ceremonies, rituals, transportation and final disposition of the deceased.

Preparation of the death notice and obituary, transcripts of death, clergy record, social security notification, veterans application, airline notifications, legal affidavits and any other forms or correspondence requested by the family in addition to Bradley's website and obituary services.

Dedicated staff who regularly receives continuing education and professional training to meet state and federal licensing requirements. Beyond licensing requirements many Bradley funeral directors are Certified Funeral Service Practitioners and have undergone Life Appreciation Training.

Basic Unallocated Funeral Provider Overhead

Also included within our professional services fee is our basic unallocated funeral provider overhead which covers fixed overhead and includes a pro-rata share of the costs for insurance, taxes, telephone and communications, secretarial and office expenses, maintenance, staff transportation, professional licensing and training, legal, accounting and other fixed expenses.

Exclusive Services

Our exclusive services also include consultation and literature to facilitate preplanning a funeral; the use of memory boards, picture stands and easels during the ceremony; literature, workbooks, pamphlets and books about trauma, children and loss, adolescents, suicide, spouse and parental loss; aftercare literature on probating wills and tying up loose ends after funerals; consultations with a Service Coordinator and Aftercare Specialist; as well as access to our website's online obituary and condolence section, a ten month subscription to the Aftercare newsletter, and two no-cost consultations with a licensed counselor from the Center for Life Transition.

Basic Services of Funeral Director and Staff

This fee for our basic services and overhead will be added to the total cost of the funeral arrangements you select. (This fee is already included in our charges for direct cremations, immediate burials, and forwarding or receiving remains.)

☐ Basic services of funeral director and staff..... \$3,495

Special Services of a Licensed Practitioner of Mortuary Science of the State of New Jersey (Funeral Director)

These special services would be long distance accompaniment to a cemetery, extraordinary reconstructive restoration, procuring consular documents, international shipping, disinterments and reburials or other arrangements not included in our basic or preparation categories. This also applies to users of the Simple Cremation package or those who have not used services requiring a basic services fee.

- ☐ Special services of funeral directorper hour \$250
- ☐ Special services of funeral assistant.....per hour \$125
- ☐ Abbreviated services of funeral director and staff with disposition by another funeral home or alternate package\$1,350

Embalming (including use of preparation room) Except in certain special cases, embalming is not required by law. Embalming may be necessary, however, if you select certain funeral arrangements, such as a funeral with viewing. If you do not want embalming, you usually have the right to choose an arrangement that does not require you to pay for it, such as direct cremation or immediate burial. *If you choose to have an embalming performed, the decedent may be embalmed at a location other than this registered mortuary.*

Embalming procedures

Our Licensed Practitioners of Mortuary Science use ‘Best Management Practices’ and ‘Universal Precautions’ as required by the blood-borne Pathogens Regulations of OSHA and the State Board of Mortuary Science of the State of New Jersey. Our fee includes the use of chemical supplies, equipment, emergency equipment for compliance with OSHA regulations for formaldehyde exposure, blood-borne pathogen exposure, work place safety and disposal of regulated medical waste.

No human remains may remain unburied or uncremated in New Jersey for more than 48 hours unless embalmed or refrigerated. (N.J.A.C.8:9-1.1)

- ☐ Standard embalming\$995

Other Preparation of the Body

(including use of preparation room but excluding embalming) *Assumes a maximum custodial care for a 48-hour period preceding disposition or following services or visiting hours.*

Dressing, Casketing & Cosmetizing — Includes sanitary bandaging or wrapping, dressing, complexion restoration and application of ornamental cosmetics, casketing, positioning and all procedures necessary for viewing of a properly embalmed body.

- ☐ Dressing, casketing and cosmetizing\$690

Sanitary Care for an Unembalmed Body — Includes hygienic washing and disinfection of an unembalmed body, using OSHA Regulations for Universal Precautions for Blood borne Pathogens, complexion restoration, dressing, casketing and any other preparation for identification, cremation or burial. Includes the use of the preparation room for cooling and sheltering to comply with N.J.A.C. 16:7-18.1 (No person shall cremate a dead human body unless at least 24 hours have elapsed from the time of death.)

- ☐ Sanitary care (topical disinfection), without embalming\$845

Preparation of the body for viewing and/or funeral if shipped in from another funeral home —

Includes any or all of the following: Removing deceased person from the shipping container, additional preservation procedures and/or hygienic bandaging, dressing, application or reapplication of cosmetics, casketing, repositioning and use of the preparation room.

- ☐ Preparation of the remains for viewing and/or funeral if shipped in from another funeral home \$150 per hour, minimum charge \$300

Additional Preparation after an autopsy has been performed

- ☐ Additional charge for the sanitary preparation, additional preservation procedures, materials and equipment for an autopsied remains.....\$395

Ceremonies

rites, rituals, observances, visitations

FACILITIES AND STAFF

At the funeral home— Our services include staff supervision of the gathering and/or funeral ceremony, supervision of the local (10 mile radius) committal service following the ceremony, set up and takedown of the rooms used.

At a location outside the funeral home— Our services may include gathering at the funeral home prior to church services, staff supervision of the ceremony, additional staff for the setup and takedown of the equipment necessary for the gathering; and service and supervision of committal.

Viewing and/or Visitation at Our Funeral Home

Use of facilities and staff for viewing, including setup of the visitation area, placement of remains (if applicable), positioning of floral displays, and supervision and attendance during the hours of visitation.

- ☐ First two hours (Includes use of one room, up to 50 people)..... \$925
- ☐ Each hour of additional visitation beyond 2 hours \$200 /hr
- Private visitation and/or identification (at convenience of funeral home) *up to 1 hour*.....\$545
- ☐ Additional fee for exclusive use of facility for visitation and/or ceremony next day\$500

Funeral Ceremony

Use of facilities and staff for a funeral ceremony, including coordinating the arrangements for the ceremony, staff supervision and attendance, the use of the funeral home when used for the ceremony and the committal service. Includes one funeral director and up to two assistants.

- ☐ From funeral home to church to cemetery/crematory (three locations same day).....\$1,040
- ☐ From church/funeral home to cemetery/crematory (two locations same day).....\$925

Memorial Service (without body present)

Use of facilities and staff for a memorial service, including coordinating the arrangements for the memorial service, staff supervision and attendance (up to two staff members), and the use of the funeral home when used for the memorial service. (Please refer to our check list for memorial services)

- ☐ At the funeral home\$945
- ☐ At another local facility (within 10 miles).....\$795

Graveside Service (cemetery or crematory) Use of equipment and staff for graveside service, including supervision, attendance and accompaniment of the remains to the cemetery or crematory, with or without family.

- ☐ Local (within 10 miles).....\$825

Additional Staff - To accommodate a large visitation, service or event per staff member \$100



Tribute and Celebrant Services

Personalized experiences are created for families and are arranged and coordinated by a Tribute Planner.

- ☐ Celebrant Service (limited to 20 miles from Funeral Home)..... \$400 - \$650
- ☐ Tribute Programs, Videos and/or Prints by Bradleysee Merchandise section
- ☐ Videographer / Live Musicians price upon request

**Add 3 hours of Funeral Director consultation at \$250/hr for Simple Cremation package or those who have not used our services requiring a basic fee.*

Special Services

Use of equipment and staff for these special services, including supervision, attendance and accompaniment of the remains.

- Vigil services at place of worship or other public place\$1,880
- ☐ Services at a private home*Price Available Upon Request*
- ☐ Burial at sea*Price Available Upon Request*
- ☐ Interment of cremated remains at a depository within 20 miles
without ceremony (includes transportation).....\$325
- ☐ Delivery and/or pickup of items (including cremated remains) for an unsupervised
memorial service (No Bradley involvement) \$250
- ☐ Use of funeral home and/or staff on Saturday.....\$500
- ☐ Use of funeral home on any legal, national holiday regular rate plus \$1,000

Sheltering

Applies only on days when no activities occur, and the funeral home is in possession of the remains.

Refrigeration may be used to shelter an unembalmed body. To learn more, ask your funeral director.

- ☐ Cremated Remains..... *per year* \$120
- ☐ Refrigeration (limited availability) *per day after 48hrs* \$150
- ☐ Sheltering embalmed remains..... *per day after 7th day of care* \$ 50

Transportation

All local transfer and transportation fees are based on 40 mile round trip from the funeral home.
Additional distance is charged at the local rate plus \$3.00 per mile.

Transfer of Remains to Funeral Home

- ☐ Local (within 40 miles) 9 AM to 9 PM\$820
- ☐ Local (within 40 miles) 9 PM to 9 AM\$860
- ☐ Additional attendant\$160

Vehicles

- ☐ Hearse, local (within 40 mile round trip).....\$650
- ☐ 7-Passenger Limousine, local (within 40 mile round trip) \$510
- ☐ 11-Passenger Limousine, local (within 40 mile round trip) \$870
- ☐ Limousine (waiting time) *per half hour* \$72
- ☐ Open Flower car, local (within 40 mile round trip).....\$445
- ☐ Flower delivery (van only)\$249
- ☐ Service vehicle to cemetery/crematory with licensed funeral director..... \$500
- ☐ Multiple Occupant service vehicle to our PA crematory.....\$390

Special Services

- Retrieval of cremated remains from crematory
within 48 hours of cremation\$130

Cash Disbursements*

ADDITIONAL EXPENSES

Arranging the funeral ceremony and committal often requires the funeral home to pay others on your behalf. We do not charge for this service. Examples of the people who may expect payment in advance include the hairdresser, cemetery, crematory, newspaper notices, church/synagogue or clergy. Often the timing of the funeral arrangements, hour, date, or holidays make it necessary for us to estimate what advances you want us to make on your behalf. The prices for those items will be shown on your bill or the statement describing the funeral goods and services you selected.

*If a credit card is used for payment of these items a 3% service fee will be added to the statement to cover the credit card processing fees. You may pay for these items with cash or a check to avoid the 3% service fee.

Example of Known Disbursements

- ☐ Pallbearers (\$100 Funeral Home/Church, \$140 Funeral Home/Church/Local Cemetery)..... *each* \$100 to \$140
- ☐ Gratuities for drivers, cemetery/crematory workers & acolytes *per person* \$10 to \$60

Merchandise

CASKET PRICE LIST - Effective 10/01/2023

Price Guarantee

If you find the same casket elsewhere for less we will match that price.

(In Morris and Union County only)

Model Name	Material	Price
Premium Solid Metals <i>Category I</i>		
Parthenon	32 oz. Bronze	\$14,240
Fine Solid Metals <i>Category II</i>		
Pieta	Copper	\$11,590
Regency	Stainless Steel	\$7,980
Savoy (velvet interior)	Stainless Steel	\$7,510
Tigereye (Nova)	16 Ga. Steel	\$7,800
Basic Solid Metals <i>Category III</i>		
Titan	18 Ga. Steel	\$5,090
Savoy Rose (crepe interior)	18 Ga. Steel	\$5,250
Springfield	18 Ga. Steel	\$4,870
Sterling	18 Ga. Steel	\$4,280
Revere	18 Ga. Steel	\$3,950
Atlantic (Peters)	20 Ga. Steel	\$3,460
Mercury	20 Ga. Steel	\$3,040
85 (interior as-is – no change available)	20 Ga. Steel	\$2,340

Specialty Caskets / Green Burial Products *		
320 Poplar (Gideon)	Poplar, Unfinished	\$2,890
Oval Top Cloth (Cosmic) 6'10" X 26"	Composition Board	\$2,270
Flat Top Cloth (Twain II) Alternative	Composition Board	\$1,430
Container/Insert	Hardwood	\$1,895
* Willow	Wicker	\$2,300
* Four-Point Bamboo Casket	Bamboo	\$995
* Bamboo Cremation Container	Bamboo	\$495
* Purelight Shroud	Linen	\$580
Tribute Casket Cherry		
Use for 2 Days (Includes wood box insert)		\$3,099
Use for 1 Day (Includes wood box insert)		\$2,575
Charge per day after second day		\$ 600

Premium Solid Wood Caskets Category I		
Royale Urn End Plank	Mahogany	\$14,410
784	Mahogany	\$8,900
Fine Solid Wood Caskets Category II		
Senator	Cherry	\$11,730
Warfield	Cherry	\$8,730
Canterbury	Cherry	\$7,880
Gatewood	Cherry	\$7,840
2000 Kimberly	Cherry	\$6,145
Sovereign	Pecan	\$7,300
Sebring	Pecan	\$4,930
Du Valais 790	Oak	\$5,380
Malorie	Maple	\$7,210
Basic Solid Wood Caskets Category III		
Westchester	Poplar	\$5,160
Harris	Poplar	\$4,940
584	Elm	\$4,850
Warwick	Poplar	\$4,810
500 Oval Top (interior as-is)	Hardwood	\$3,320
Veneer Caskets Category III (Pink or blue interior only)		
Whitmire II Poplar with Walnut Stain	Poplar Veneer	\$3,630
Endicott	Poplar Veneer	\$3,550
Sandhurst Poplar	Poplar Veneer	\$3,530
Ashford	Poplar Veneer	\$3,495

**Many caskets available as Full-Open. Ask for details.*

Merchandise

OUTER BURIAL CONTAINER PRICE LIST (VAULTS) - *Effective 01/01/2024*

CONCRETE BURIAL VAULTS (Warranted)

Olympian Bronze

48 oz. Bronze exterior surrounding 5000 psi reinforced concrete. Interior of base and cover consists of 16 oz. bronze bonded to Fiberlon lining. Hand brushed with clear-coat finish includes wreath and personalized name plate. Special order requires one week to complete.

Over 200 year warranty\$25,900

Bronze

16 oz. bronze liner and ABS Fiberlon liner bonded to high strength concrete. Structural bronze carapace for enhanced beauty and strength. Textured exterior, name plate, emblem and bar handles.

200 year warranty\$6,495

Lydian

16 oz. copper liner and ABS Fiberlon liner bonded to high strength concrete. Structural bronze carapace for enhanced beauty and strength. Textured exterior, name plate, emblem and bar handles.

150 year warranty\$5,995

Athenian

26 ga. stainless steel liner and ABS Fiberlon liner bonded to high strength concrete. Structural bronze carapace for enhanced beauty and strength. Textured exterior, name plate, emblem and bar handles. Also available: "Veteran," military blue with appropriate military branch emblem. "Cameo Rose", Feminine pink with rose emblem.

125 year warranty\$4,995

Patrician *Best Value*

High strength ABS Lustra-Tech, high impact, high strength concrete with Durapreme liner bonded to interior with water based polystyrene liner, sealant. Structural ABS carapace for enhanced beauty and strength.

100 year warranty\$3,995

Fiber Phoenix *Better Value*

High strength concrete with high impact fiber reinforced polystyrene liner.

90 year warranty\$3,495

Titan

High strength concrete with Durapreme polystyrene liner.

70 year warranty\$2,995

GRAVE LINERS AND OTHERS

Concrete Sealed Box (Unwarranted)

Basic 28 - 30".....	\$2,549
•Concrete Rough Box.....	\$2,395
•Wood Outer Case.....	\$1,895
•Steel Casket Liner with Zinc	\$2,395
•Mausoguard for Entombment.....	\$1,149
•Ensure-a-seal for Entombment	\$1,195
•Metal Tray for Entombment	\$785
•Airtray/Shipping Case Combination.....	\$725
•Airtray.....	\$495
•Zinc Box for disinterment (including soldering)	\$2,495

CEMETERY EQUIPMENT

With Vault

•Grass, Lowering Device and Tent (if desired and allowed by cemetery).....	\$150
--	-------

Without Vault

•Grass & Lowering Device	\$325
•Tent (if allowed by cemetery).....	\$325
•Grass, Lowering Device and Tent used together.....	\$475

****For exact costs, check with your funeral director. Your cemetery may have different charges or provide equipment.***

In most areas of the country, state or local law does not require that you buy a container to surround the casket in the grave. However, many cemeteries require that you have such a container so that the grave will not sink in. Either a burial vault or a grave liner will satisfy these requirements.

ALL VAULTS, when delivered and installed on Sundays are an additional \$450 & Holidays \$750.



Warranty Disclaimer: Our funeral home makes no representations or warranties regarding caskets, outer burial containers or other funeral goods sold by the funeral home. The only warranties, express or implied, granted in connection with the goods sold with this funeral service are the express written warranties, if any, extended by the manufacturers thereof. No other warranties, express or implied, including the implied warranties of merchantability or fitness for a particular purpose, are extended by the funeral home. No burial product or process offered by this firm prevents the decomposition of remains.

Merchandise

Urns

Price Guarantee

If you find the same urn elsewhere for less we will match that price.

(In Morris and Union County only)

Description	Price
FULL-SIZED URNS	
Rose Bouquet CR064	\$3,170
Sandblast w/ Brass Base 820	\$530
Solitude 385	\$350
Guardian 375	\$780
Oxford Memory Chest 505	\$310
Wellington Mahogany 3534	\$530
Grecian 545	\$980
Book & Vine ZB071	\$830
Scenic Marble 901(Series)	\$620
Basic Bamboo RUCBB	\$210
Regal with Rose 5502	\$320
Bronze Chest 500	\$380
Embassy Oak 3526	\$290
Fairmount Cherry 3523	\$300
Blue Copper Cloisonné 826	\$330
Tiger Eye Marble 903	\$300
Bengal Marble 902	\$300
Butterfly Copper Cloisonné 832	\$330
Cultured Marble Urn	\$270
Ocean Sunset Scattering Urn	\$120
Above urns include personalization (name, dates, photos & symbols) and regular shipping. Overnight shipping \$175 additional. * personalization not available. Add \$50 for shipping and handling for users of Simple Cremation package.	

Transfer of cremated remains:

Transferring of cremated remains into 1-3 pieces of jewelry.....\$50
 Each additional transfer after 3 pieces.....\$10/each
 Transferring of cremated remains into an urn purchased from third party.....\$50

RENTAL URN	
Fairmount Cherry	\$ 60
BIODEGRADABLE URN	
Journey Urn	\$150
BURIAL URN VAULTS	
Athenian Triple wall urn vault (SST, ABS liner, reinforced concrete)	\$1,110
Patrician Double wall urn vault (ABS liner, reinforced concrete)	\$895
Plastic Marbleized urn vault for in-ground burials	\$620
Basic Concrete urn vault for in-ground burials	\$610

ADDITIONAL MERCHANDISE

Grave Marker (temporary).....	\$50
Rosary Beads	\$20 & up
Cross / Crucifix.....	\$40 & up
Rental of A/V Equipment on site (includes 1 hr of technician time).....	\$150
Mailing of death certificates.....	\$25

Burial Clothing:

Dresses	\$175 & up
Suits.....	\$210 & up
Undergarments	\$40

Tributes & Keepsakes

We offer a selection of print mementos from Messenger Fine Funeral Stationery including prayer cards, register books, service folders, and grave markers. In addition, Bradley Funeral Homes has a graphic designer on staff who will custom design prayer cards, bookmarks or other print tribute items to your specifications.

Messenger Fine Funeral Stationery

Prayer Cards (100, including 10 laminated):	\$95
Acknowledgement (Thank You) Cards (100):	\$80
Basic Register Book:.....	\$95

Messenger Stationery Package

Includes register book, 100 prayer cards, and 50 acknowledgement cards

\$295



Custom Prints by Bradley

Custom Prayer Card Pricing

100:	\$250
150:	\$275
200:	\$300
250:	\$325
300:	\$350
350:	\$375



Prices include 10 laminated; \$1 each additional lamination.

Ask your funeral professional about pricing on custom bookmarks, posters, or other print tributes.

Online Funerals, Memorials & Tributes

Live-Streaming & Recorded Services Pricing

Includes up to 2 hours per location & one USB copy.

1 Location.....	\$500
2 Locations.....	\$750
3 Locations.....	\$875

Tributes by Bradley *continued*

Memorial Programs

Our Tribute Programs are co-created with you by our tribute creative services manager and serve not only as a personalized record of a life well remembered, but as a keepsake for years to come. They may be used as both a supplement to, or in lieu of, a traditional Order of Service provided by a church.

Basic Program/Order of Service

Program features photo, name, dates on cover; obituary and order of service inside

4-page program: \$195 (Q: 100; \$1 each additional)

Printed on premium 32lb smooth stationery stock (white or ivory)

Custom Photo Memorial Program

Photo program features name, dates on cover; custom-designed photo obituary with captions or quotations on inside and back cover

4-page custom photo program: \$395 (Q: 100; \$1 each additional)

Printed on premium 32lb smooth stationery stock (white or ivory)



Miscellaneous

Personalized Thank You Cards

4.25 x 5.5 folded cards on premium white notecard stock with matching envelopes; features template cover (or photo) plus thank you verse and family name(s) inside

50 cards/envelopes: \$95 (extra cards/envelopes: \$1 each set)

Enlarged Photo Display Poster

Enlarged photo printed and mounted on foamcore and displayed on an easel at services

2' x 3' poster mounted on foamcore: \$95 - \$125 (based on amount of photo editing/enhancement needed)

Custom posters may also be created using a variety of photos/images. Please ask your funeral professional for details.

Videos

Once you provide pictures of your loved one, either digitally or as print photos, our video technician will help bring your loved one's story to life. A tribute video can be shown at the service of your choice: visitation, church service, tribute luncheon or repast, or it can be kept as a keepsake and copies can be given to family and friends. All tribute videos created by Bradley are posted to your loved one's online obituary page, where they will remain indefinitely and where additional copies and keepsakes may be ordered directly at any time.



Base Tribute Video: \$195

Includes up to 50 photos with photo enhancing/editing where needed, choice of theme (custom themes are available using your own picture), and music of your choice. Includes digital video placement on website tribute page and 1 USB.

Add-on Costs:

Each additional photo over 50: \$2/photo

DVDs: \$25/each

Extra Memory Thumb Drives: \$20/each

Conversion of family supplied video for funeral home and website display: \$95

Alternative Selections

These package charges do not include cash disbursements or anything not expressly stated as being provided. For other options, please refer to the selections on this General Price List.

Forwarding of Remains to Another Funeral Home within the USA\$3,215

This package includes local (40 miles round trip) transfer of remains to the funeral home, basic services of funeral director and staff, sheltering of remains for up to 48 hours, embalming, identification prior to forwarding, obtaining necessary permits and delivery to Newark Liberty International Airport. It does not include a casket or alternative or shipping container, the use of facilities and staff for any visitation or ceremony, public or private, prior to forwarding the remains, or any sheltering for days on which no post death activities occur. Nor does it include the charges of a common carrier.

Receiving of Remains from Another Funeral Home within the USA\$3,215

This package includes receiving the remains from another funeral home or airport, sheltering of the remains for up to 48 hours, basic services of funeral director and staff, obtaining necessary permits and authorizations and local (40 miles round trip) transportation to the cemetery or crematory and interment performed within 48 hours. It does not include the use of facilities and staff for any visitation or ceremony, public or private, prior to burial or cremation, or any sheltering for days on which no post death activities occur. Nor does it include the charges of a common carrier.

Immediate Burial (Does not include any graveside ceremony).....\$5,595 to \$15,605

This package for an immediate burial includes basic services of the funeral director and staff, the local (within 20 miles) transfer of the remains to the funeral home, sheltering of the remains for up to 48 hours, the obtaining of necessary permits and authorizations, sanitary care and preparation of remains for identification, use of facilities and staff for private visitation or identification (up to one hour) prior to burial, and local transportation to the cemetery. This charge does not include any sheltering for days on which no post death activities occur. Nor does it include the actual cost of the grave at the cemetery, or the cemetery's charges for opening and closing of the grave or an outer burial container (if required by the cemetery).

Immediate burial with container (must meet cemetery requirements) provided by purchaser\$5,595

Immediate burial with casket selected from our funeral home (in addition to cost of casket)\$5,595

Direct Cremation

Our package charge for direct cremation includes up to the following restricted basic services of the funeral director and staff, the local transfer (within a 40 mile round trip) of the remains to either our Chatham or Springfield funeral home, sheltering of the remains until the identification process has been completed, the obtaining of necessary permits, authorizations and transcripts, preparation and/or placement of newspaper notices, filing Social Security and/or Veteran's forms, arranging for the disposition of cremated remains, sanitary care and preparation of remains for identification, use of facilities and staff for arrangements and private visitation for identification (up to one hour) or use of our Posi-ID system prior to cremation, and local transportation to the crematory.

The arrangement consultation and identification will be held either at Wm. A. Bradley & Son Funeral Home, Chatham or Bradley, Smith & Smith Funeral Home, Springfield, Monday through Friday between 10am and 2pm. Arrangement consultation and identification will be completed concurrently. This charge does not include the actual cost of the cremation process, which is a crematory charge. If Bradley & Son Funeral Homes, LLC is to hold cremated remains for a period longer than seven days a holding fee will be charged.

Cash disbursements to cover the cost of cremation, burial permits, certified copies of death certificates and other costs will be paid by the funeral home for the convenience of the family. The family must provide those funds (at cost) at the time of arrangements for these additional items.

If you want to arrange a direct cremation, you can use an alternative container. Alternative containers encase the body and can be made of materials like fiberboard or composition materials (with or without an outside covering). The containers we provide are either unfinished wood, cardboard or bamboo.

Direct cremation with container provided by purchaser\$3,979

Direct cremation with cleaner, greener & beautiful bamboo container.....\$4,474

Direct cremation with unfinished wood alternative container.....\$5,074

Direct cremation with casket selected from our funeral home..... \$3,979

(in addition to the cost of the casket)

BRADLEY FUNERAL HOMES IS HERE FOR YOU EVERY STEP OF THE WAY.

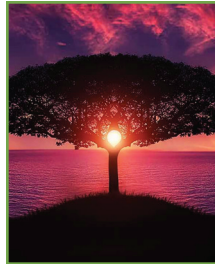
Advance Funeral & Memorial Planning



BradleyAdvancePlanning.com

973-635-2428 x107


Simple Cremation New Jersey
Personal, Professional & Affordable



SimpleCremationNJ.com

At Bradley Funeral Homes, you can take advantage of considerable savings if you're considering a direct cremation.


CENTER FOR LIFE TRANSITION



BradleyFuneralHomes.com/cflt

Comprehensive aftercare program.



Ask About our Green Burials

Find out more at:

bradleyfuneralhomes.com/arrange-a-funeral/green-burials/



BRADLEY

& SON FUNERAL HOMES, LLC

www.BradleyFuneralHomes.com

N.J.A.C 13.36-5.2 1 — A person who owns 50 percent or greater interest in this registered mortuary also owns 50 percent or greater interest in the following registered mortuaries in the State of New Jersey:

Wm. A. Bradley & Son Funeral Home, Chatham
Bradley-Braviak Funeral Home, Whippany
Bradley, Haeberle & Barth Funeral Home, Union
Bradley, Smith & Smith Funeral Home, Springfield
Bradley, Brough & Dangler Funeral Home, Summit